



39° 00' 33.13" N
87° 07' 31.59" W
ELEVATION: 475 FT

 Tallgrass Prairie

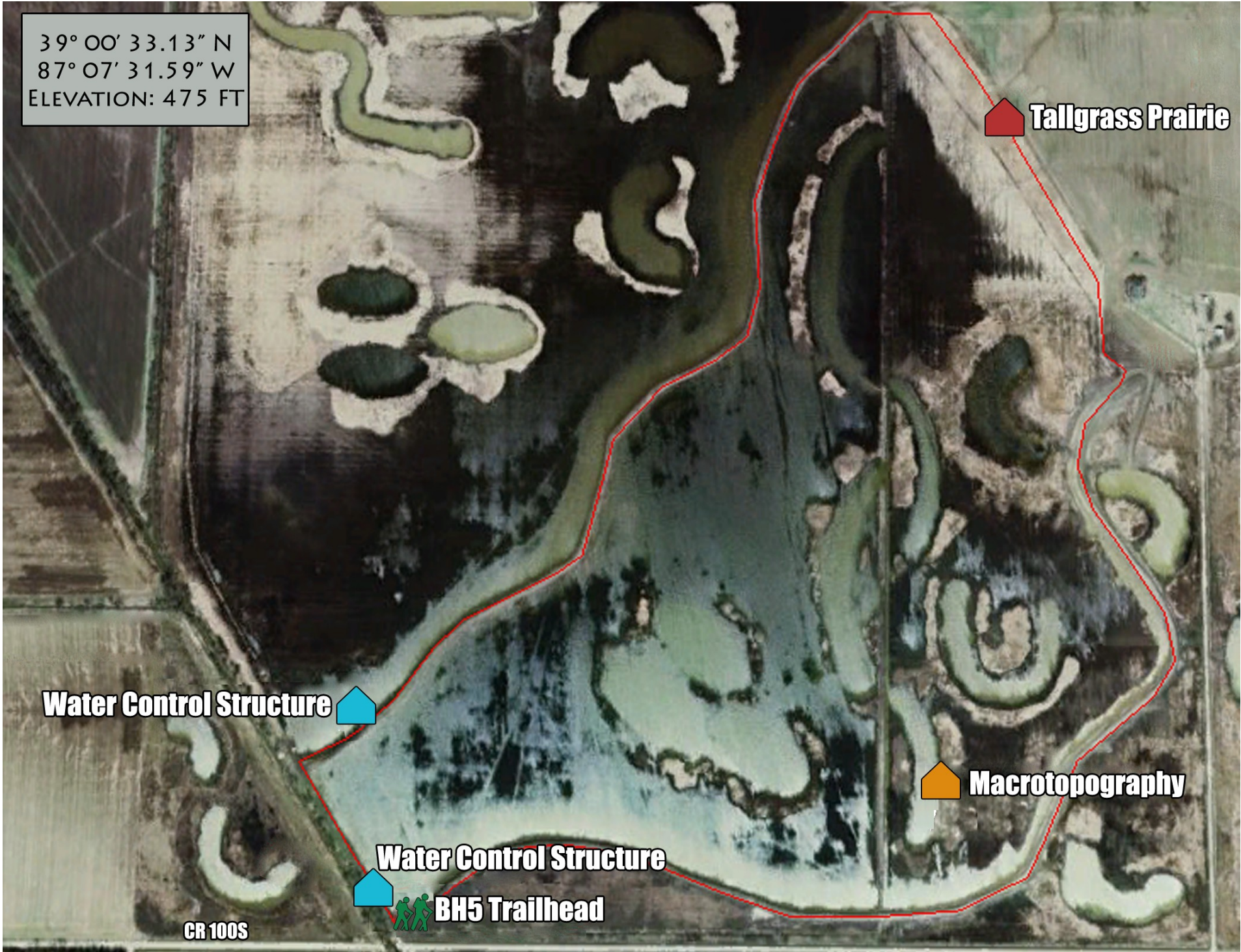
Water Control Structure 

 Macrotopography

Water Control Structure

  BH5 Trailhead

CR 100S





For Further
Information
Contact
Property Manager's
Office
GPFWA

RR1 box 431
Linton IN. 47441
(812) 659-9901



Beehunter 5 Walking Path

Welcome to Beehunter 5 walking path. The water in this unit ranges from a few inches to over 6 feet and encompasses approximately 140 acres. This unit is a typical representation of other 4000 acres of restored wetlands on the property.

The large aluminum structure near the parking lot is one of over 40 control structures that have been installed as part of the wetland restoration.

The control structure allows for the raising and lowering of water levels to manage for a variety of shorebirds.

The approximately 2.25 mile long trail provides for some good wildlife viewing. Some of the wildlife you may observe are the Greater and Lesser Yellowlegs and a variety of ducks and geese. The Great Blue Heron and the Great Egret have been seen here. Beaver and Muskrat are also common to this unit. As you progress into the Tallgrass Prairie you may also see Whitetail Deer, the North American Coyote and the Red Fox.

To fully enjoy your walk; boots, insect repellent, sunscreen and binoculars are recommended.